

Non-Cylindrical and -60 Probe Setup

Frequently Asked Question #8

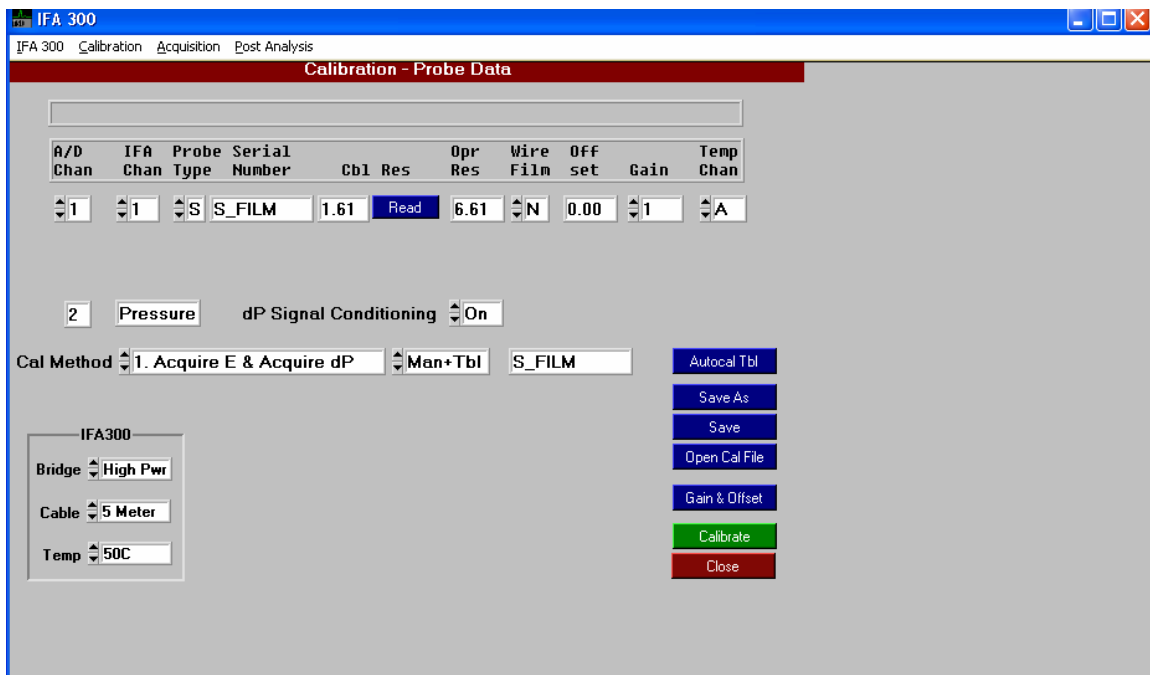
Question:

I am trying to run my 1210-60 probe using the IFA300 and ThermalPro. For some reason, the program “freezes” when I start taking the first calibration point. What could be the problem?

Answer:

The -60 probe (e.g., 1210-60) and the non-cylindrical probes (cone, wedge, etc...) require a large amount of current to run, since the amount of material comprising them is so great. For this reason, it should be selected as “N - Non-Cylindrical” in the probe data setup screen under “Wire/Film.” In addition, the Bridge should be set to “High Pwr.”

Wire/Film: “N” Non-Cylindrical
 Bridge: “High Pwr” High Power Bridge



TSI Incorporated - 500 Cardigan Road, Shoreview, MN 55126-3996 USA
USA Tel: +1 800 874 2811 E-mail: fluid@tsi.com Website: www.tsi.com
UK Tel: +44 149 4 459200 E-mail: tsuuk@tsi.com Website: www.tsiinc.co.uk
France Tel: +33 491 95 21 90 E-mail: tsifrance@tsi.com Website: www.tsiinc.fr
Germany Tel: +49 241 523030 E-mail: tsigmbh@tsi.com Website: www.tsiinc.de
Sweden Tel: +46 8 595 13230 E-mail: tsiab@tsi.com Website: www.tsi.se
India Tel: +91 80 41132470 E-mail: tsi-india@tsi.com
China Tel: +86 10 8260 1595 E-mail: tsibeijing@tsi.com

Contact your local TSI Distributor or visit our website www.tsi.com for more detailed specifications.



TRUST. SCIENCE. INNOVATION.