

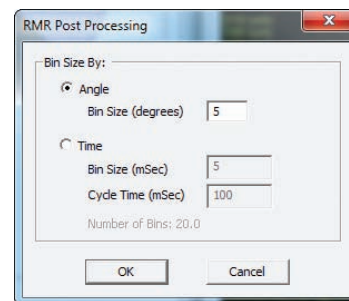
FLOWSIZER Rotating Machinery Resolver: more flexible with more ways to analyze data

- Phase averaging of mean and RMS velocities and mean and RMS diameters within a user-selectable angular interval
- Auto-fill function for quickly applying offsets and window disable regions
- User-selectable independent variable (time or angle-based).
- Simple TTL-based reset signal triggers new cycle, particularly useful for pulsed sprays where testing is done away from the reciprocating engine

FLOWSIZER™ 3.0 for Windows® 7

TSI's FLOWSIZER Data Acquisition and Analysis Software package sets the standard for Windows® 7 based acquisition and analysis of LDV and PDPA data. This release allows the software to operate in Windows® 7 32 bit environment, while maintaining Windows® XP compatibility.

The FLOWSIZER software package has always included an easy-to-use interface, full-featured rotating machinery support, full traverse support, user-defined customizable graphics, user-defined statistics, power spectrum features, and data export. The FLOWSIZER 3.0 software continues the tradition of including all the needed features in a single, 32-bit software package. Now designed for Windows 7, the software can take advantage of the new operating system for enhanced graphic display.



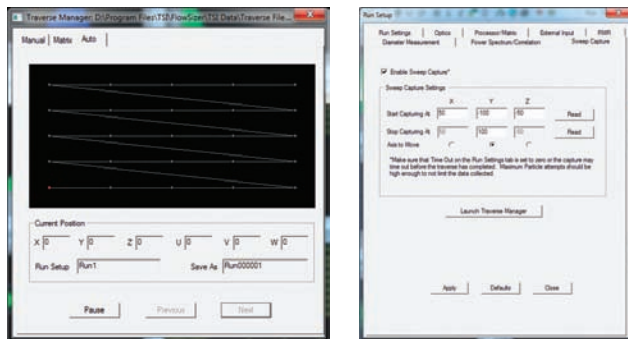
FLOWSIZER interface is now more user-friendly, more advanced

- Dual-monitor set-ups now possible
- Easy, two-click, menu-bar access to stored data
- Probe volume correction (PVC) over a maximum of 3,000 diameter bins



FLowsizer Traverse control even more feature packed

- Current traverse position automatically updated after each event
- Read position function easily switches between local and remote control modes
- New capture mode performs “sweep captures” through sprays
- FLowsizer software allows user entry of traverse position in manual mode
- Plot label changes “remembered” to minimize formatting edits



FLowsizer Custom Graphics and Plots

- New diameter plots feature normal, modified log-normal, Matsumoto-Takahashi, and Nukiyama-Tanasawa fitting routines
- Normalized count (probability), normalized volume, and cumulative distributions provided
- Interarrival time now available for plot and ASCII export

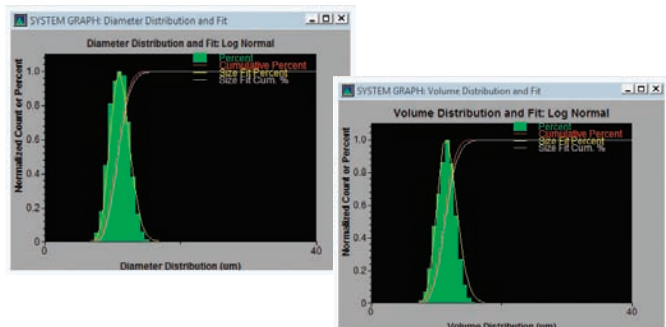
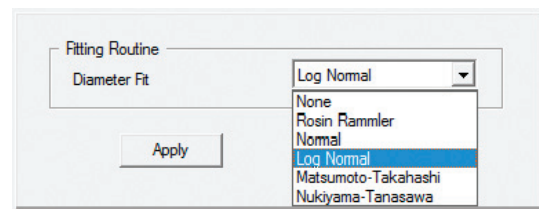
FLowsizer ASCII Export Features

- User-selectable data exported in TecPlot® or .csv formats
- New fitted diameter distributions exported
- Expanded selection of diameter and volume statistics exported for advanced statistical analysis



FLowsizer Custom Statistics

- Fitting parameters available from new diameter fits include normal, modified log-normal, Matsumoto-Takahashi, and Nukiyama-Tanasawa routines
- Fitted diameter statistics (D10, D32, etc.) available for display and export
- Enhanced text-based statistics copy/paste function
- Velocity statistics have increased display resolution



FSA Upgrade to FLowsizer Version 3.0

To upgrade an FSA signal processor to take advantage of the FLowsizer Version 3.0 software, purchase the **RP-FSA-WIN7-UP** package which updates the chip set in the processor. Contact TSI for more details.

TSI Incorporated - 500 Cardigan Road, Shoreview, MN 55126-3996 USA
USA Tel: +1 800 874 2811 E-mail: answers@tsi.com Website: www.tsi.com
UK Tel: +44 149 4 459200 E-mail: tsiuk@tsi.com Website: www.tsiinc.co.uk
France Tel: +33 491 11 87 64 E-mail: tsifrance@tsi.com Website: www.tsiinc.fr
Germany Tel: +49 241 523030 E-mail: tsigmbh@tsi.com Website: www.tsiinc.de
India Tel: +91 80 41132470 E-mail: tsi-india@tsi.com
China Tel: +86 10 8251 6588 E-mail: tsibeijing@tsi.com
Singapore Tel: +65 6595 6388 E-mail: tsi-singapore@tsi.com



TRUST. SCIENCE. INNOVATION.

Contact your local TSI Distributor or visit our website www.tsi.com for more detailed specifications.