

FMS 5.0 Facility Monitoring Software for Electronic and Semiconductor Applications



CONTROLLED ENVIRONMENTS

Contamination Control



TRUST. SCIENCE. INNOVATION.

FMS 5.0, the Leading Facility Monitoring Software

TSI FMS system is an advanced, reliable, and user-friendly monitoring software suite that features a truly open architecture, supporting multiple instrument inputs from any manufacturer. Typical inputs include:

- Airborne particle counters
- Temperature and humidity sensors
- Differential pressure gauges
- Liquid particle counters
- ESD
- Airborne molecular contamination and more

Features and Benefits

- Open architecture
- Controls multi-point monitoring systems
- SPC control charts
- Real-time data
- Graphs of information vs. time to identify trends
- Logs events and alarms
- Built-in system redundancy
- Unique Buddy automatic hot standby option
- Back up via mirror database
- Intuitive operation
- Multi-level maps
- Notifications via email, SMS, and telephone
- Display and auto reporting
- User defined reporting
- Easy data export
- Group, acknowledgement and auto alarms

Optimize Control with FMS 5.0

For electronics, semiconductor, hard disk drive, and other applications, FMS 5.0 assists in maintaining contamination control of critical manufacturing processes. FMS 5.0 comes with built-in Statistical Process Control (SPC) tools. SPC parameters can be defined for Upper Control Limits, Lower Control Limits, mean crowding, alarm number, and trend number. Control charts can be generated by utilizing FMS 5.0's graphing function, and can aid in providing proactive predictive alarms to help alleviate issues before they arise. For defined sample points, detailed SPC information is displayed when accessed via the statistics function. FMS 5.0 provides a complete, statistical monitoring system with the data integrity needed to ensure optimal facility output.



Example of SPC charts in FMS 5.0

Control with FMS 5.0

Ease of Use

An intuitive, user configurable interface means immediate visibility of real-time data. Single mouse click access to historical data and report generation leads to reduced operator training, immediate data access and improved process control.



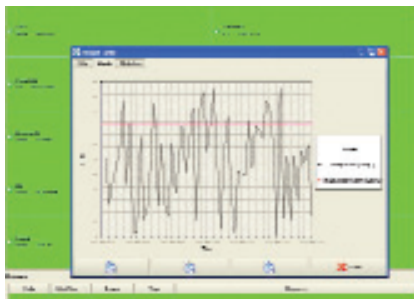
Communication

FMS 5.0 supports multiple system outputs like beacons, sounders, SMS text, email, auto-dialers and reporting are supported. Operators and managers are immediately informed of an event. This information aids in root cause investigations, process validation and improved product quality.



Graphing & Reporting

FMS comes with its own report generation tool. This allows users to create customized reports to meet your needs. Where more advanced reporting is required, third party tools can be easily deployed to use with FMS 5.0 databases. All



collected data can be turned into useful process information via powerful FMS 5.0 reporting and graphing tools. Critical reports can be generated each day, and auto reports can be created based on recorded events.

Mapping

Multi-level maps display the last recorded value for each instrument and show real-time icons in Red for Alarm, Yellow for Warning, Green for Ok and Blue for instrument failure. Simply click on the instrument icon for instant, detailed information.

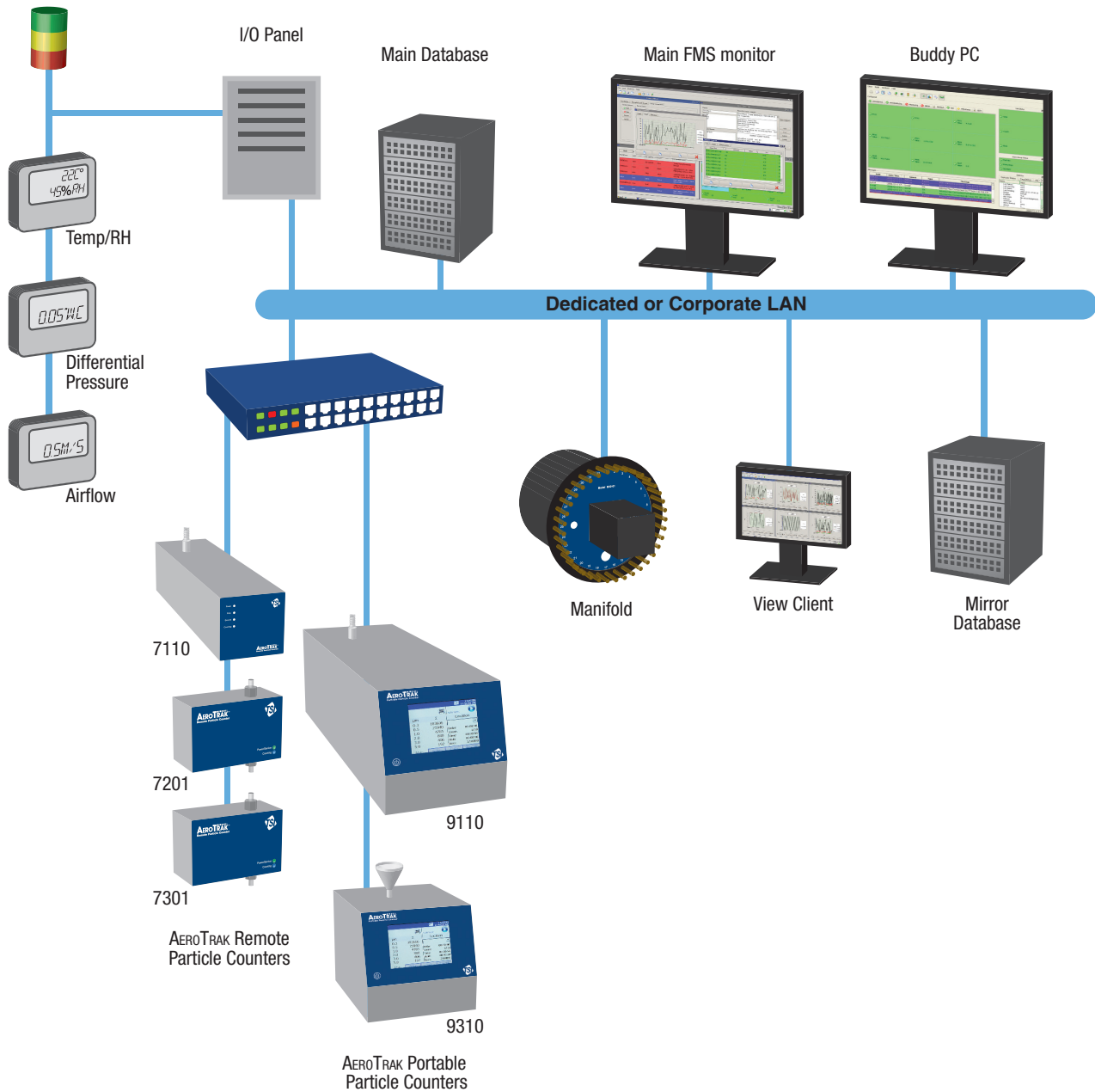


Need a Buddy?

FMS offers a unique Buddy (Automatic Hot Standby) system option for built-in system redundancy. This completely integrated back-up system resides on an alternate computer. If anything happens to the primary FMS 5.0 system, the Buddy automatically takes over, continuing to collect secure data. No manual intervention is required in the event of a computer failure, meaning no system down time, no lost validated data, and peace of mind.



Facility Monitoring System Overview:



TSI Incorporated serves a global market by investigating, identifying and solving measurement problems. As an industry leader in the design and production of precision instruments, TSI partners with research institutions and customers around the world to set the standard for measurements relating to aerosol science, air flow, health and safety, indoor air quality, fluid dynamics and biohazard detection. With headquarters based in the U.S. and field offices throughout Europe and Asia, TSI has established a worldwide presence in the markets we serve. Every day, our dedicated employees turn research into reality.

TSI Incorporated - 500 Cardigan Road, Shoreview, MN 55126-3996 USA

USA	Tel: +1 800 874 2811	E-mail: info@tsi.com	Website: www.tsi.com
UK	Tel: +44 149 4 459200	E-mail: tsiuk@tsi.com	Website: www.tsiinc.co.uk
France	Tel: +33 491 11 87 64	E-mail: tsifrance@tsi.com	Website: www.tsiinc.fr
Germany	Tel: +49 241 523030	E-mail: tsigmbh@tsi.com	Website: www.tsiinc.de
India	Tel: +91 80 41132470	E-mail: tsi-india@tsi.com	
China	Tel: +86 10 8260 1595	E-mail: tsibeijing@tsi.com	
Singapore	Tel: +65 6595 6377	E-mail: tsi-singapore@tsi.com	



TRUST. SCIENCE. INNOVATION.

Contact your local TSI Distributor or visit our website www.tsi.com for more detailed specifications.