

## Bluetooth® Communications for the Model 9565 VELOCICALC® Meter and Model 7575 Q-TRAK™ Monitor

Application Note TSI-150

The Model 9565 VELOCICALC meter and Model 7575 Q-TRAK IAQ monitor feature Bluetooth wireless communications for use with a Bluetooth-enabled computer. A computer can command the VELOCICALC or Q-TRAK meter to:

- Reply with model and serial numbers of the VELOCICALC or Q-TRAK meter and the currently attached probe.
- Reply with current values for all measurements to be logged.
- Reply with logged data either for a particular TestID or all TestIDs.
- Change the names of TestIDs used to log data.

### Bluetooth Communications Requirements

Bluetooth communications between a TSI instrument and computer require Bluetooth communications and use of a terminal emulation program, such as HyperTerminal, be installed on the computer. This application note assumes that you already have Bluetooth communications installed on your computer. If your computer does not have Bluetooth communications, purchase and install a Bluetooth dongle or another means of Bluetooth communications. HyperTerminal is included in Windows® XP and earlier operating systems, but not in Windows Vista® or Windows 7 operating systems.

- For Windows XP operating system or earlier, you can find HyperTerminal by clicking on the **Start** button, then **All Programs**, **Accessories** and finally **Communications**.

If HyperTerminal is not installed on your computer, install it by opening the **Control Panel**, selecting **Add or Remove Programs**, selecting **Add/Remove Windows Components**, and choosing **HyperTerminal**.

- For Windows Vista and Windows 7 operating systems, obtain and install a terminal emulation program. Purchase HyperTerminal from Hilgraeve or obtain another terminal emulation program.

Bluetooth is a registered trademark of Bluetooth SIG.  
Microsoft, Windows, Vista, and Excel are registered trademarks of Microsoft Corporation.  
TSI and VELOCICALC are registered trademarks of TSI Incorporated.  
TSI logo and Q-TRAK are trademarks of TSI Incorporated.



## Bluetooth Setup

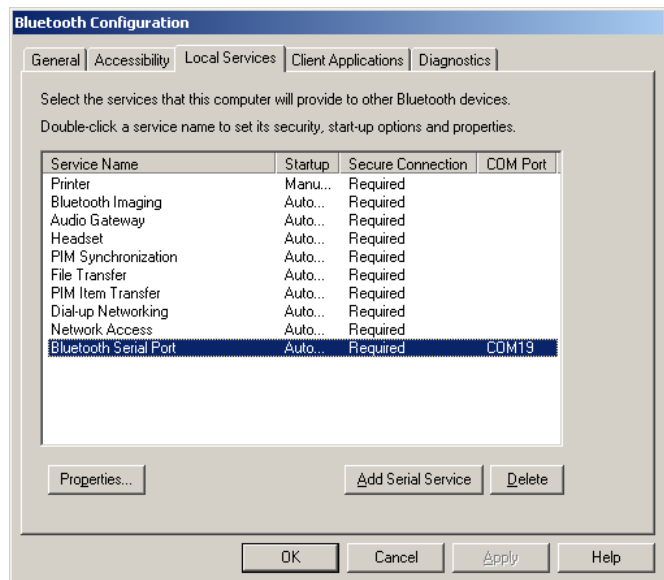
Bluetooth data transfers occur over a Bluetooth Serial Port. To determine the COM Port of the Bluetooth Serial Port:

1. Right-click the Bluetooth icon in the lower right-hand corner of the screen.
2. Select “Bluetooth Configuration” as shown in Figure 1.
3. Determine the COM port used for Bluetooth communications. Depending on the drivers on your computer, the COM Port used may be on the **Communications Port** tab, **Local Services** tab, or elsewhere. Take note of the COM port for later use.
4. Select the **Start up automatically** checkbox, which may be found by double-clicking the **Bluetooth Serial Port** in the **Local Services** tab as shown in Figure 2, to allow the TSI instrument to connect in the future without going through this process.
5. Ensure that the TSI Instrument can find your computer by selecting **Let other Bluetooth devices discover this computer**, on the Accessibility tab as shown in Figure 3.
6. Select the **OK** button to save changes and exit.

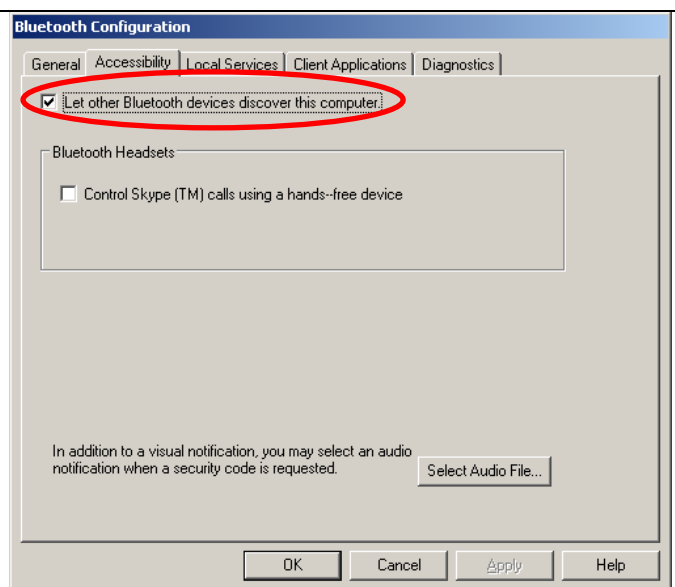
*Note: You may have to press the **OK** button on more than one window.*



**Figure 1. Selecting Bluetooth Configuration.**



**Figure 2. Selecting Bluetooth Serial Port.**



**Figure 3. Enabling Bluetooth Discovery.**

## Configuring the Terminal Emulation Program

You must configure your terminal emulator program for Bluetooth communications. This application note assumes you are using HyperTerminal, although other terminal emulation programs may be similar. The steps to configure HyperTerminal to work with the TSI instrument are:

1. Run the HyperTerminal program.
2. If this is the first time you run the HyperTerminal program, it may prompt you to enter details such as area code, carrier code, or a number to access an outside line. You can hit the **CANCEL** button without entering these details as they are not used for Bluetooth communications.
3. Enter a name for your HyperTerminal configuration, such as “TSI Comm” and select an icon to use.
4. Select the COM port used by your computer’s Bluetooth communications. This is the COM port noted in Step 3 of the Bluetooth Setup section.
5. Baud rate, data bits, parity, stop bits, and flow control are not used with Bluetooth communications. Select the **OK** button to continue.
6. Select the **File** menu and the **Properties** item. Then select the **Settings** tab and the **ASCII Setup** button as shown in Figure 4.
7. Select the check boxes **Send line ends with line feeds** and **Echo typed characters locally**. Also, configure a line delay of **150** milliseconds. These settings are shown in Figure 5. Press the **OK** button twice to save changes and exit the menus.
8. Save these configuration settings using the **File** menu and **Save** command within HyperTerminal to avoid re-entering them when communicating with a TSI instrument in the future.

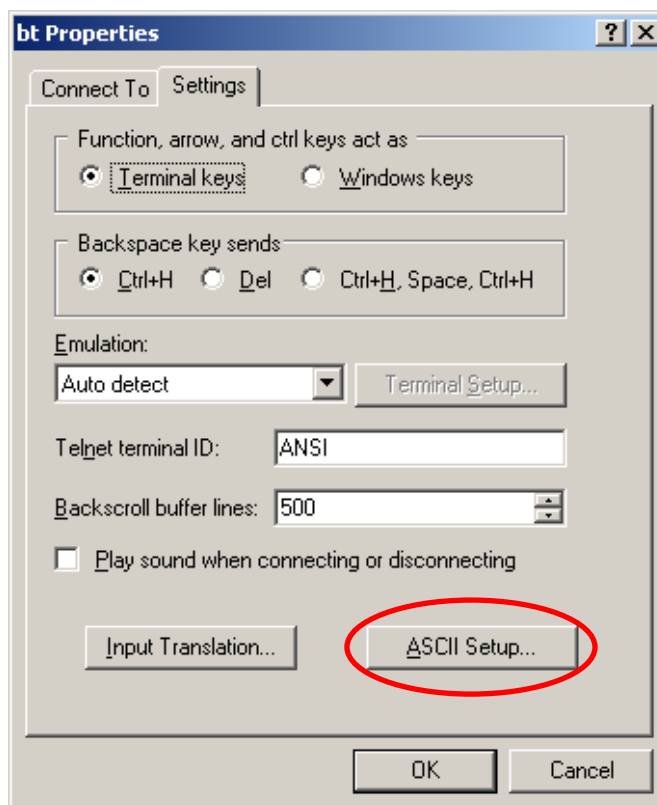


Figure 4. Selecting ASCII Setup.

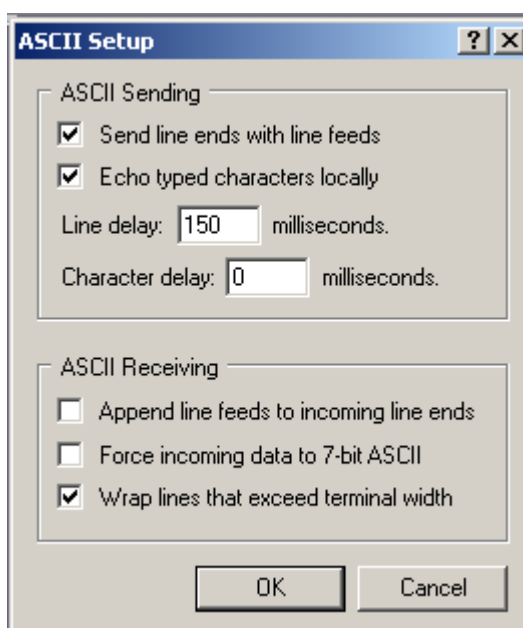


Figure 5. Recommended Settings in ASCII Setup.

## Pairing the Model 9565 VELOCICALC or Model 7565 Q-TRAK to Your Computer

Once the HyperTerminal program is configured and running on your computer, you can pair (or connect) the instrument to your computer by following these steps:

1. Press the **MENU** softkey on the instrument.
2. Select the **Discover Bluetooth** item.
3. The instrument will display a progress bar as it searches for available Bluetooth devices. When the progress bar is complete (which may take several seconds), the instrument will display found devices either by their configured names or by their Bluetooth addresses. Highlight the computer you wish to connect to and press the **↵** key on the instrument.
4. Your computer may open a window prompting you to enter a Bluetooth PINcode, which is a security key, into your computer. The factory default PINcode is **0000**. Enter the PINcode and press the **FINISH** button.

**CAUTION:** You can set the Bluetooth PINcode to a different value with the Bluetooth PINcode item in the **SETTINGS** menu. Changing the PINcode will prevent use of the Model 8934 printer with your instrument.

You have approximately 30 seconds to enter the Bluetooth PINcode into your computer. If time runs out before you enter the PINcode, you may have to re-connect Bluetooth communications on your computer and start the pairing process over.

5. The VELOCICALC or Q-TRAK meter will prompt you to select “Printer” or “Computer”. Select **Computer** and press the **↵** key. If “Printer” is selected, the TSI instrument will pause for 0.1 second after sending each line. Bluetooth communications to the computer will still function.
6. The TSI instrument will return to the main menu. Press the **ESC** key to return to the running screen to enable communications. The TSI instrument display will now indicate a Bluetooth logo, as shown in Figure 6, in the upper right to indicate successful Bluetooth communications.



**Figure 6. Bluetooth Logo on TSI Meter to Indicate Pairing.**

**NOTE:** Once the VELOCICALC or Q-TRAK meter has been successfully paired with a computer, the meter will attempt to reconnect whenever it is turned on. If the connection fails, you can manually attempt to reconnect by pressing the **PRINT** softkey or repeating the Pairing process.

The VELOCICALC and Q-TRAK meters can only be paired with 1 device at a time.

## Sending Commands to the VELOCICALC or Q-TRAK Meter

**CAUTION:** Before sending commands to the VELOCICALC or Q-TRAK meter, make sure the meter is in the main running screen with measurements displayed. If the meter is in the menu system, press the **ESC** key until you reach the running screen.

The VELOCICALC and Q-TRAK meters use Serial Port Protocol, or SPP, with four available commands:

- Identify
- Values
- Change TESTID Name
- Logged Data

**NOTE:** After sending each command, the VELOCICALC or Q-TRAK meter must receive a Carriage Return character. This character is sent when you press the **<Enter>** key on your computer. If you create a program to automatically request data, use the ASCII character 13, hexadecimal value 0x0D.

### Identify

Send the command **I** to the meter to command it to identify itself. The meter will respond with:

- Meter model number
- Meter serial number
- Meter calibration date
- Meter firmware revision

If a probe is attached to the meter, the meter will also respond with:

- Probe model number
- Probe serial number
- Probe calibration date

### Values

Send the **V** command to the meter to command it to respond with:

- Current date and time
- Displayed measurements

To select the measurements to be sent over Bluetooth communications, choose to display them through the **Display Setup** menu on the meter.

**NOTE:** Using the **Display Setup** menu, you can select more measurements than the VELOCICALC or Q-TRAK meter can display on its screen. The meter will give the message “Error: Maximum of four secondary measurements can be displayed. Turn OFF measurement.” All selected measurements will print via Bluetooth even if they do not appear on the instrument’s screen.

## Change TESTID Name

You can upload TESTID names to your VELOCICALC or Q-TRAK meter instead of entering them in through the keypad. To do this, use the command **TIDnnn xxxxxxxx**  
where nnn is the number of the TestID  
xxxxxxx is the new TestID name

The TID command to change the TestID Name has a number of constraints:

- The number of the TestID, nnn, must be 3 digits long. The first TestID is then TestID001.
- There must be a [tab] character between TIDnnn and xxxxxxxx. If you write a program to automate naming TestIDs, use the character \t (ASCII character 09).
- The new TestID name, xxxxxxxx, can be a maximum of 8 characters long.
- The new TestID name, xxxxxxxx, can only be comprised of the characters: !"#%&'()\*+,-./0123456789:;<=>?@ABCDEFGHIJKLMNPOQRSTUVWXYZ [ ] ^ \_ ` abcdefghijklmnopqrstuvwxyz { } ~. Using other characters will either cause the new name to be rejected or result in incorrect characters in the new name.
- If a TestID has already been renamed, you must still refer to it by its number. For example, assume that you renamed TestID001 to "TEST1". If you now want to change the name to "NewTest", you would use the command "TID001 NewTest".
- To delete TestID Names, select the **Data Logging** menu on the meter. Then select **Delete Data** and **Delete All**.

**CAUTION:** Deleting all data will delete TestID Names and all logged data. Download saved data before selecting **Delete All** data.

If you have many TestID names to upload, you can create a file to change the names in batch mode. To create this file:

**CAUTION:** Set HyperTerminal or your terminal emulation program to include a 150 msec delay between lines. If no delay is present or the delay is too short, the TSI meter may skip some commands. If you encounter errors with a 150 msec delay, lengthen the delay.

1. In Microsoft Excel® or another spreadsheet program, enter the TID command and TestID# in the first column of cells. Enter the new TestID Names in the second column of cells. The spreadsheet should appear similar to **Figure 7**.
2. Save the file as a tab-delimited text file. Your spreadsheet program may warn that functionality may be lost, but this is acceptable.

TID001	TSITEST1
TID002	TSITEST2
TID003	TSITEST3
TID004	TSITEST4
TID005	TSITEST5
TID006	TSITEST6

**Figure 7. Sample Spreadsheet to Rename TestIDs 1 to 6.**

3. In your terminal emulation program, transfer this file to the VELOCICALC or Q-TRAK meter. In HyperTerminal, you can do this by selecting **Transfer**, then **Send Text File**. This opens a window to select the text file you just created. Opening this text file sends the commands to the TSI meter.

## View Logged Data

Sending the command **L** will command the VELOCICALC or Q-TRAK meter to respond with logged data. You have two options when commanding the meter to return logged data:

- If the command is **Lxxxxxxx**, only data for the TestID named xxxxxxxx will be returned. For example, sending the command **LTSITEST1** will command the instrument to send back data from TestID **TSITEST1** but no other TestIDs.
- If the command is **L**, without a TestID specified, all data will be sent.

When the instrument returns logged data, it will first send a header with:

- Meter model number
- Meter serial number
- Meter calibration date
- Meter firmware revision

If a probe is attached to the meter, the meter will also respond with:

- Probe model number
- Probe serial number
- Probe calibration date

The header will also include the date and time of the first sample.

After the header, the meter will provide statistics (average, minimum reading, maximum reading and number of samples) for each measurement type (such as temperature or velocity). The meter will then provide all samples. Each measurement of a sample will be on its own line, preceded by the time the measurement was taken. For example, if a sample has four measurements then the sample will appear on four lines.

---

TSI Incorporated – 500 Cardigan Road, Shoreview, MN 55126 U.S.A

USA	Tel: +1 800 874 2811	E-mail: <a href="mailto:info@tsi.com">info@tsi.com</a>	Website: <a href="http://www.tsi.com">www.tsi.com</a>
UK	Tel: +44 149 4 459200	E-mail: <a href="mailto:tsiuk@tsi.com">tsiuk@tsi.com</a>	Website: <a href="http://www.tsiinc.co.uk">www.tsiinc.co.uk</a>
France	Tel: +33 491 11 87 64	E-mail: <a href="mailto:tsifrance@tsi.com">tsifrance@tsi.com</a>	Website: <a href="http://www.tsiinc.fr">www.tsiinc.fr</a>
Germany	Tel: +49 241 523030	E-mail: <a href="mailto:tsigmbh@tsi.com">tsigmbh@tsi.com</a>	Website: <a href="http://www.tsiinc.de">www.tsiinc.de</a>
India	Tel: +91 80 41132470	E-mail: <a href="mailto:tsi-india@tsi.com">tsi-india@tsi.com</a>	
China	Tel: +86 10 8251 6588	E-mail: <a href="mailto:tsibeijing@tsi.com">tsibeijing@tsi.com</a>	
Singapore	Tel: +65 6595 6388	E-mail: <a href="mailto:tsi-singapore@tsi.com">tsi-singapore@tsi.com</a>	



TRUST. SCIENCE. INNOVATION.

Contact your local TSI Distributor or visit our website [www.tsi.com](http://www.tsi.com) for more detailed specifications.